

IOT PLATFORMS AND PRACTICAL EXPERIENCE

17 AUGUST 2017



7,5 Bln people WW
Over 15 Bln connected devices
IoP IoT IoE

Things...

Sensors Actuators Controllers

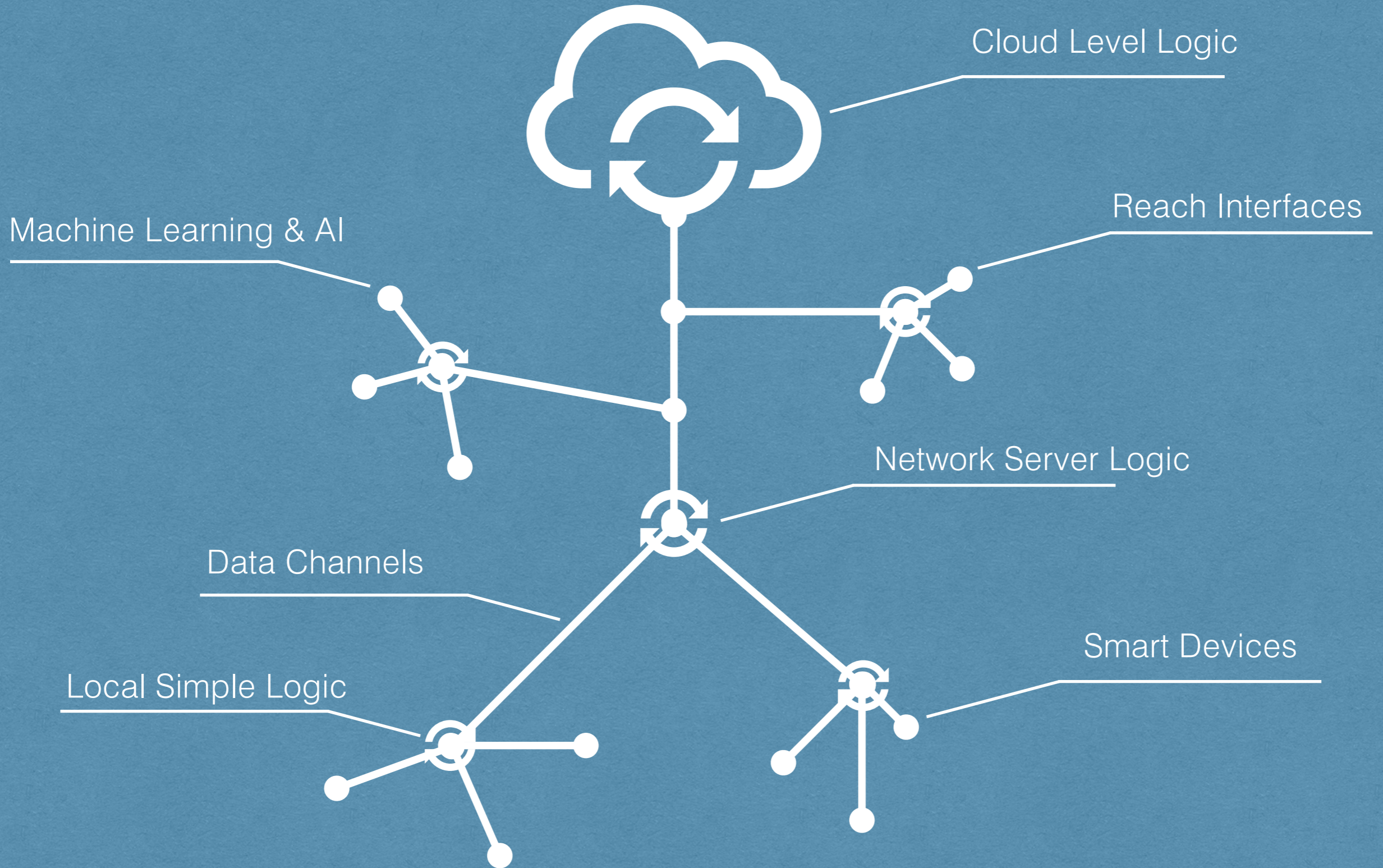
Connectivity...
Z-Wave, ZigBee, LoRa, eMTC, NB-IoT,...
WiFi? Eth? BT?

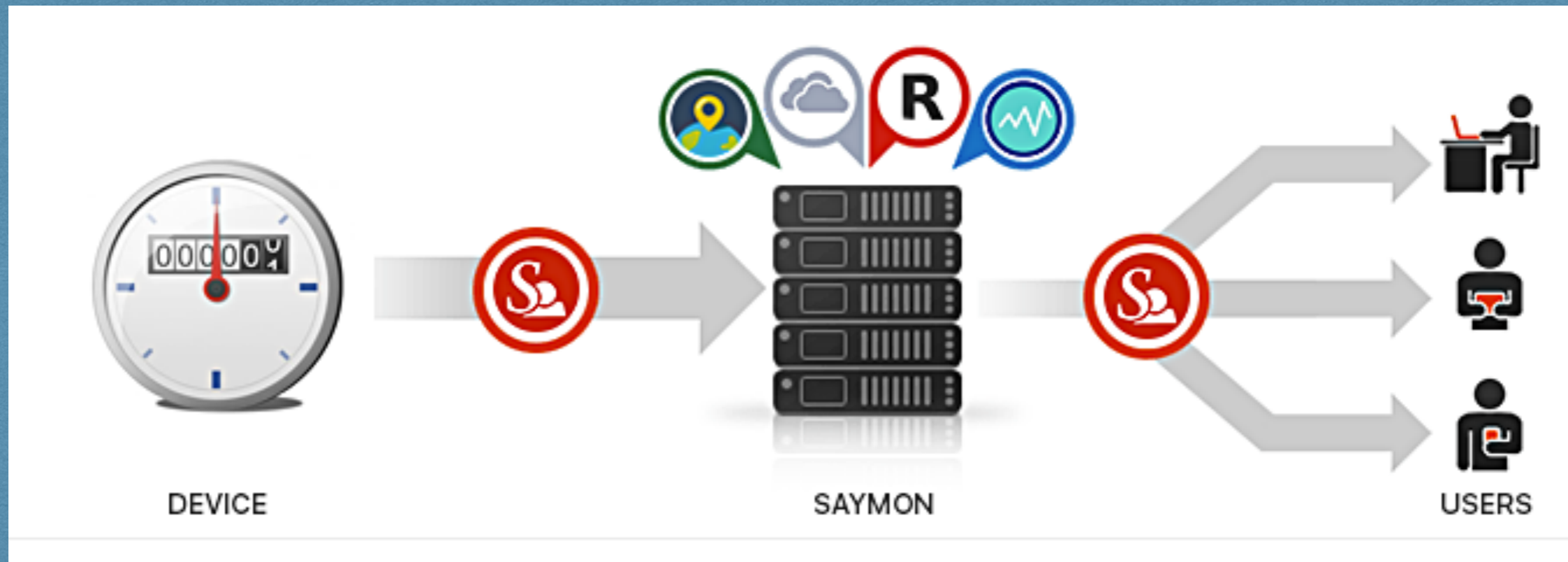
Over 150 IoT Platforms WW



<https://www.postscapes.com/internet-of-things-platforms>

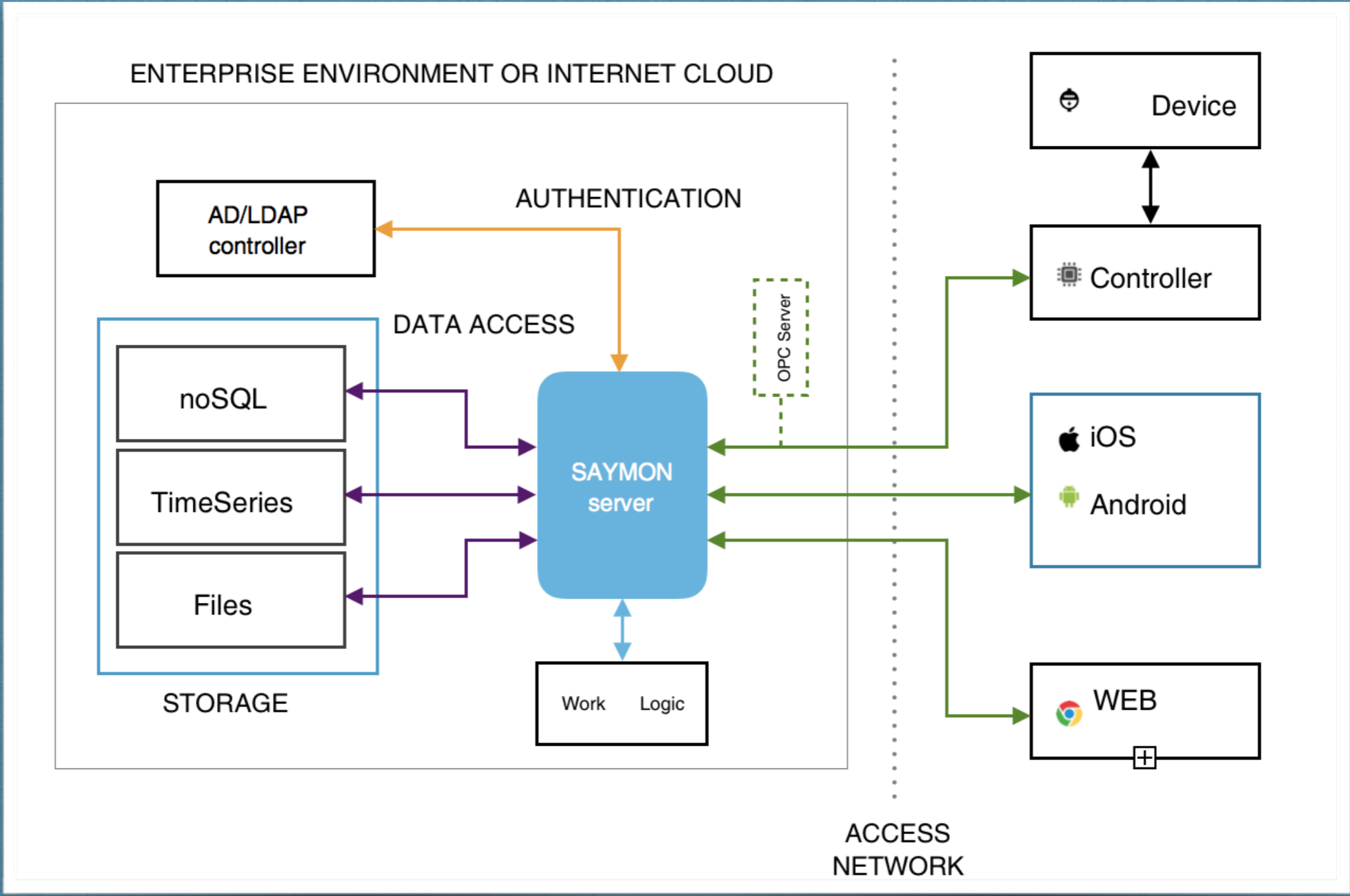




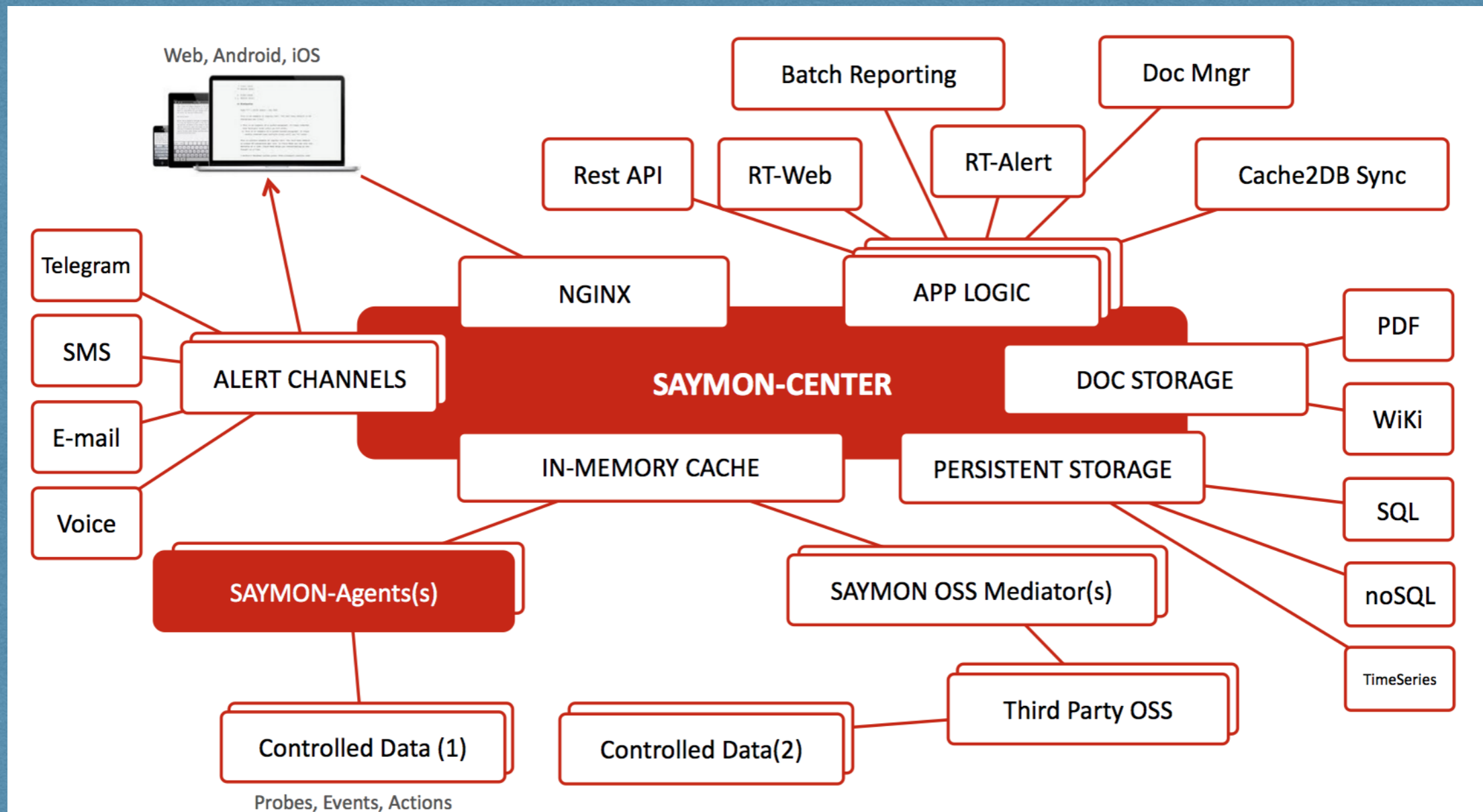


Collect, Store (Long Time),
Analyse, Act, Cloud, Access

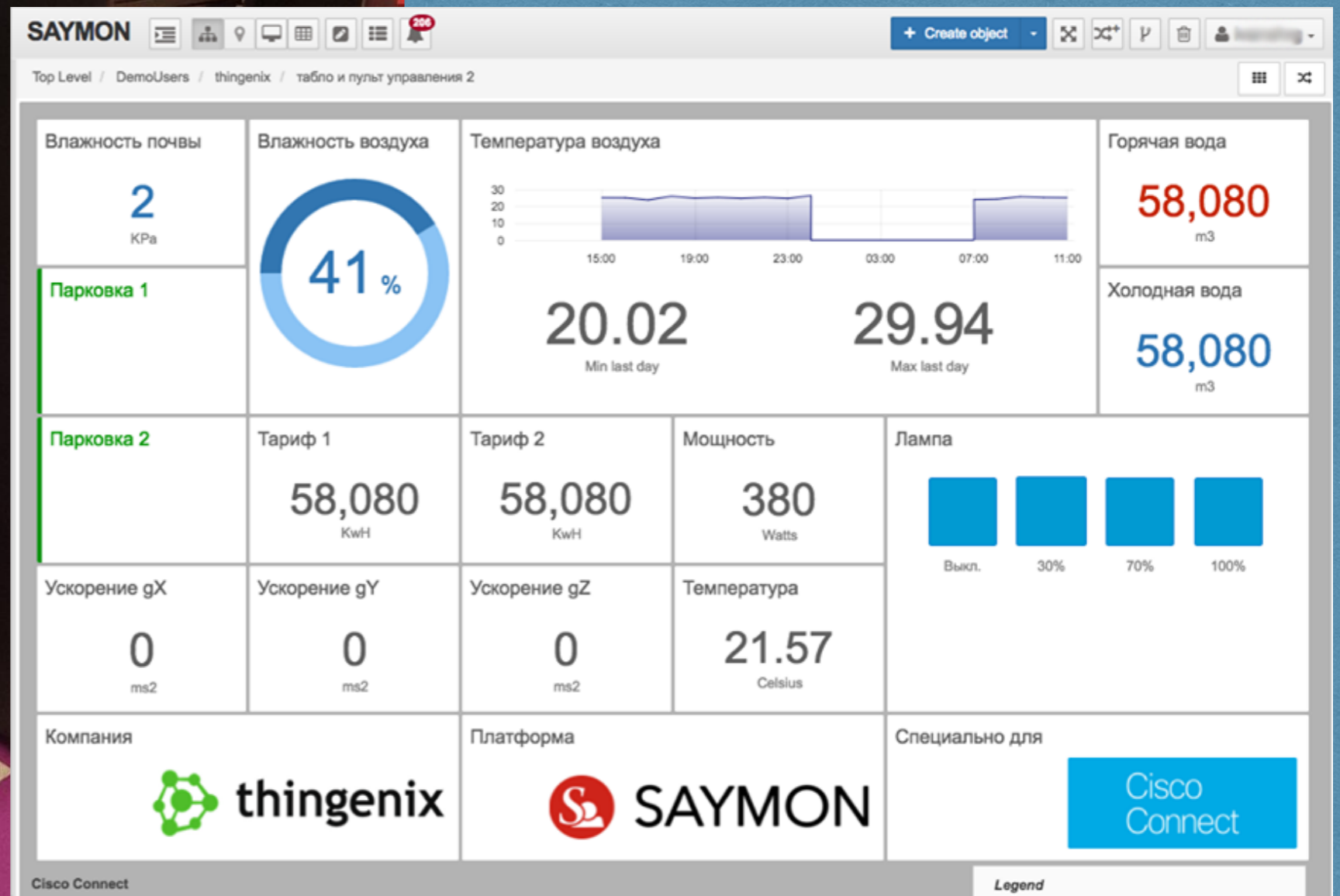
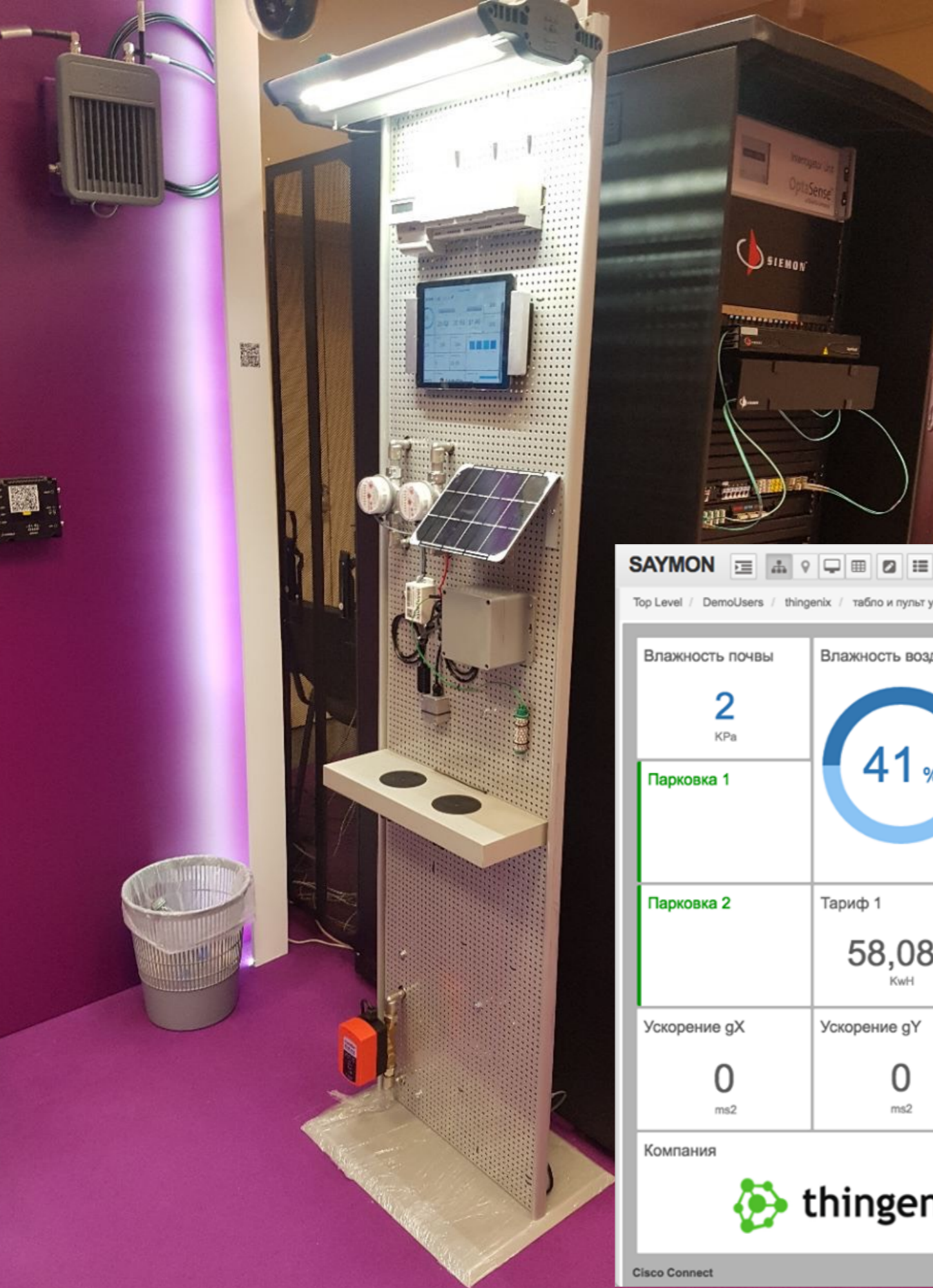
Architecture



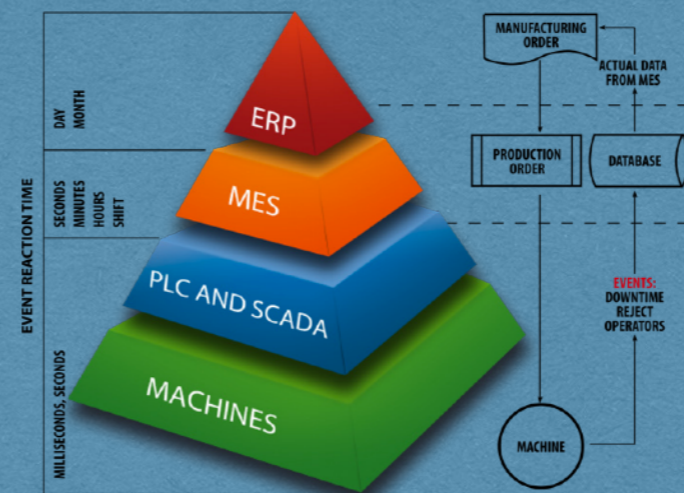
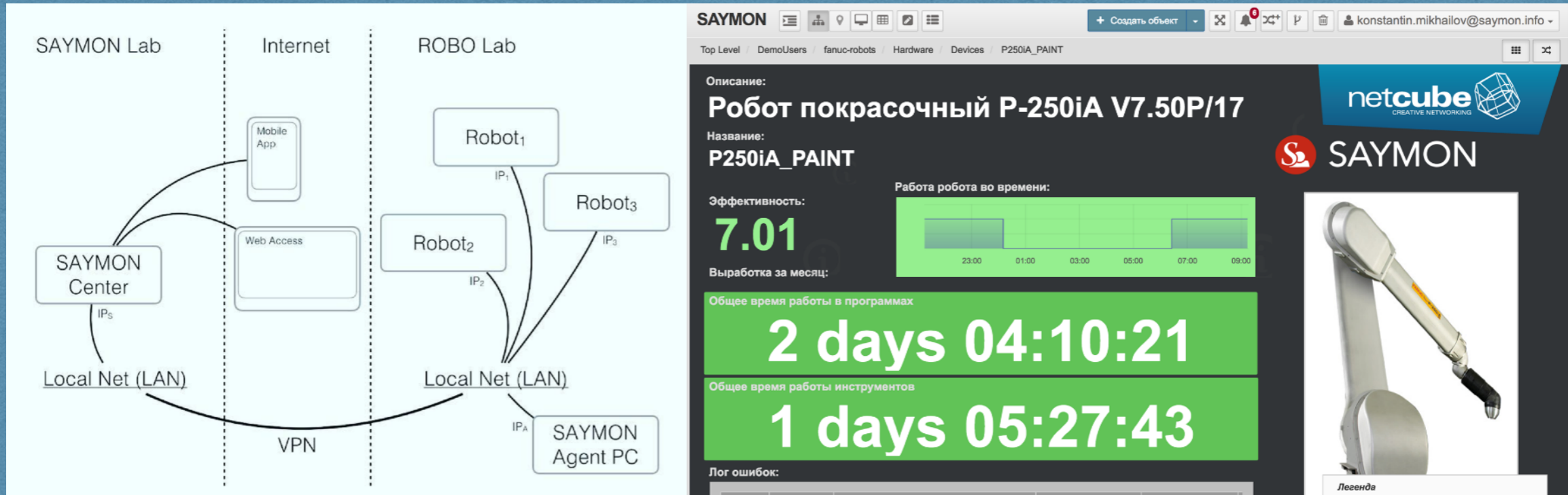
Architecture



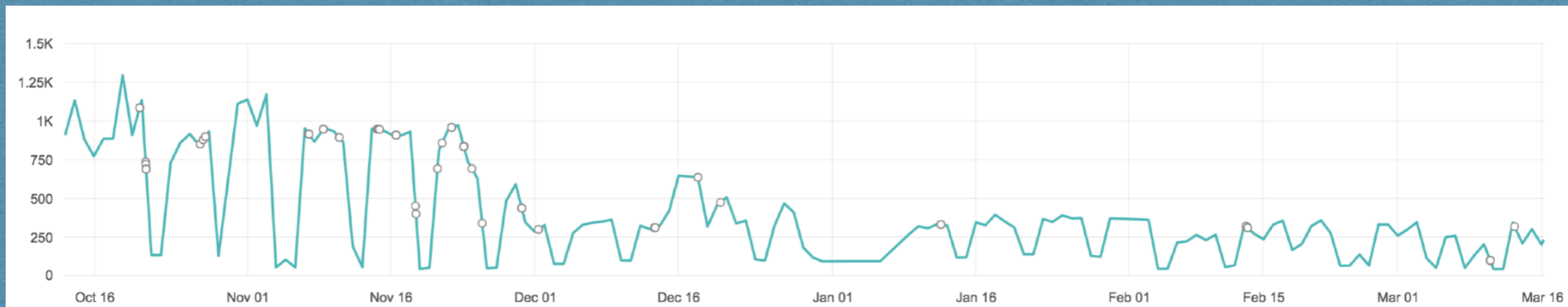
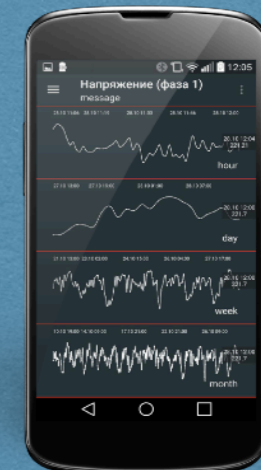
Show Case



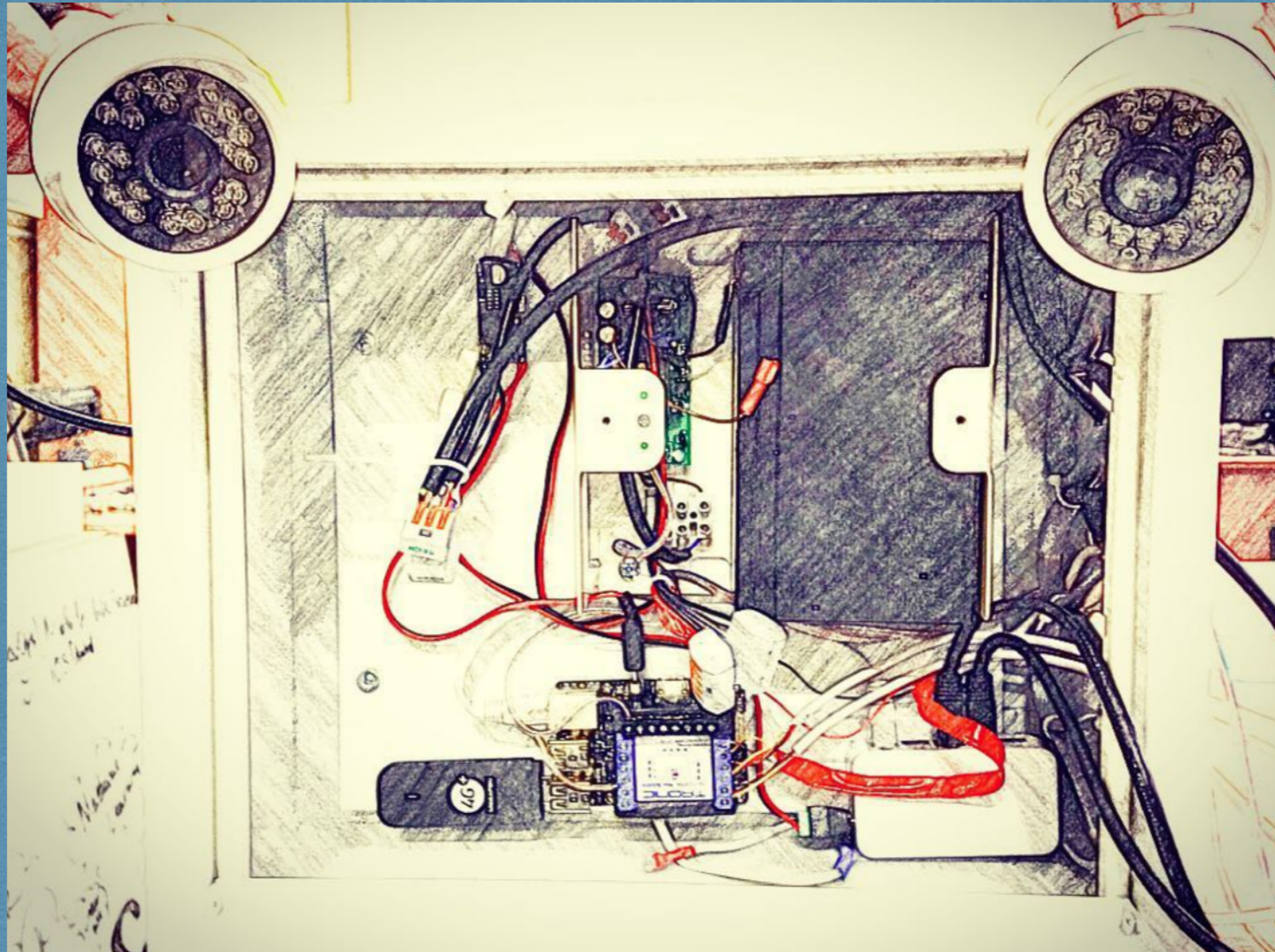
Show Case



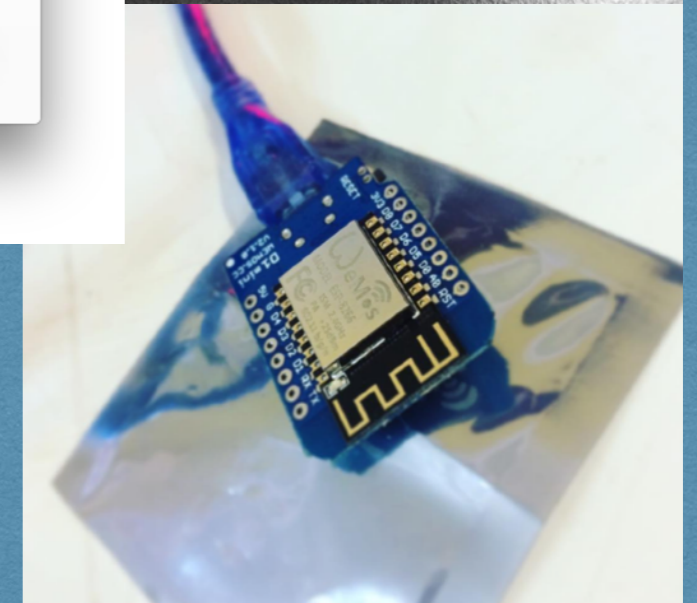
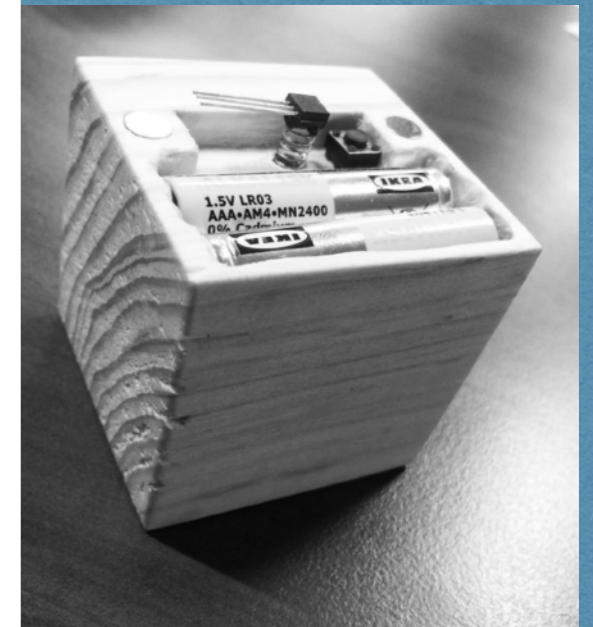
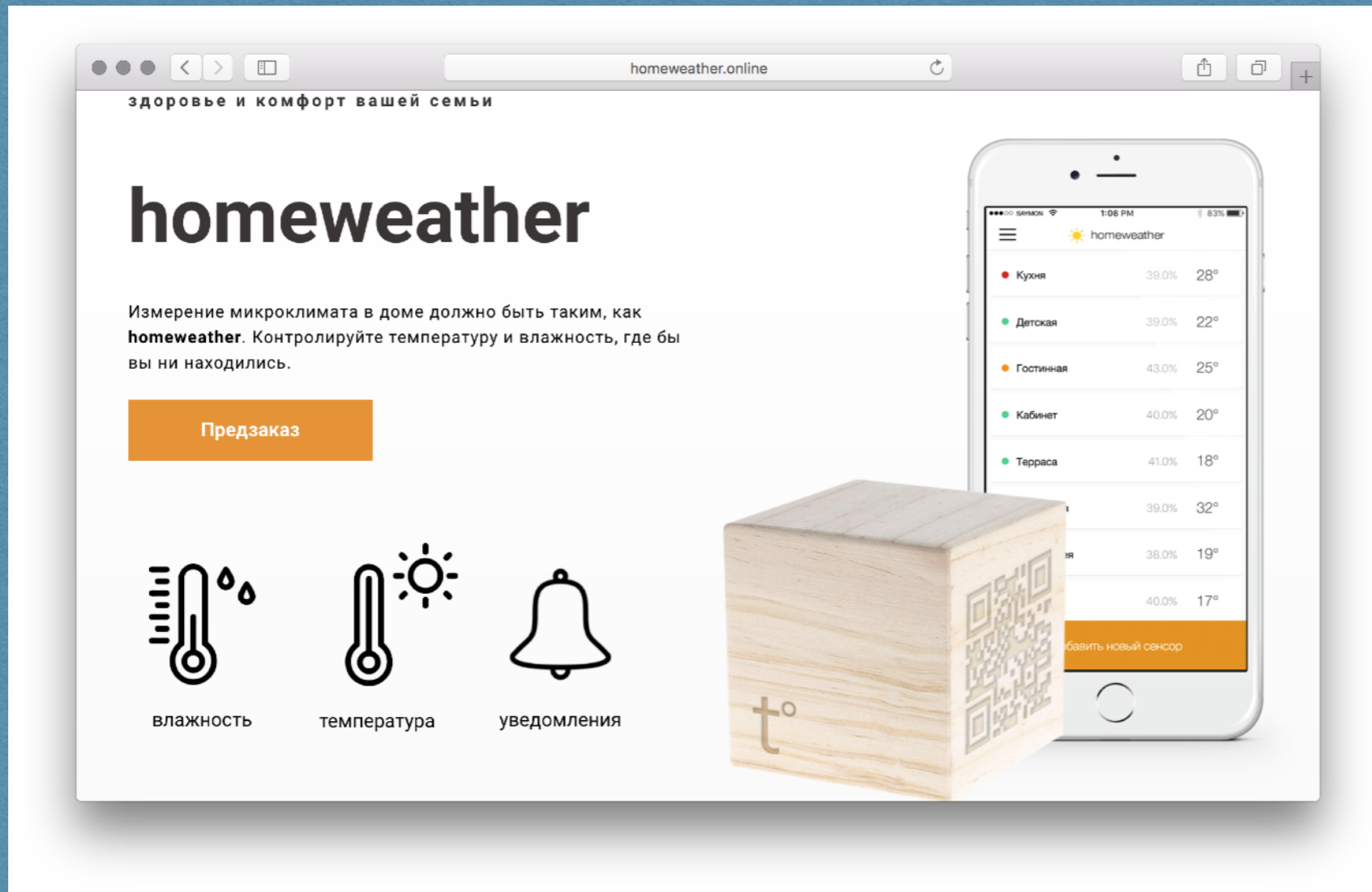
Use Case



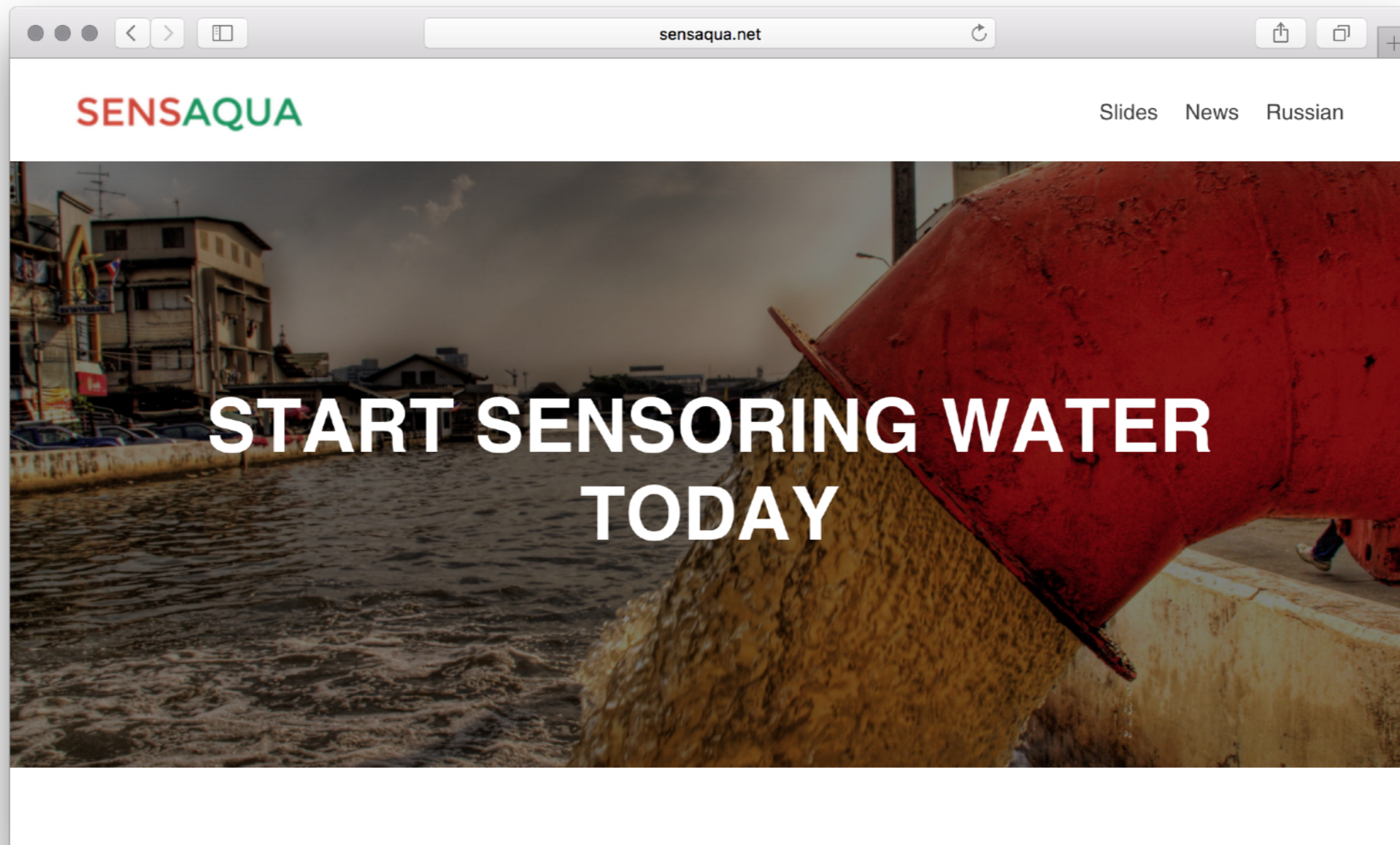
Use Case



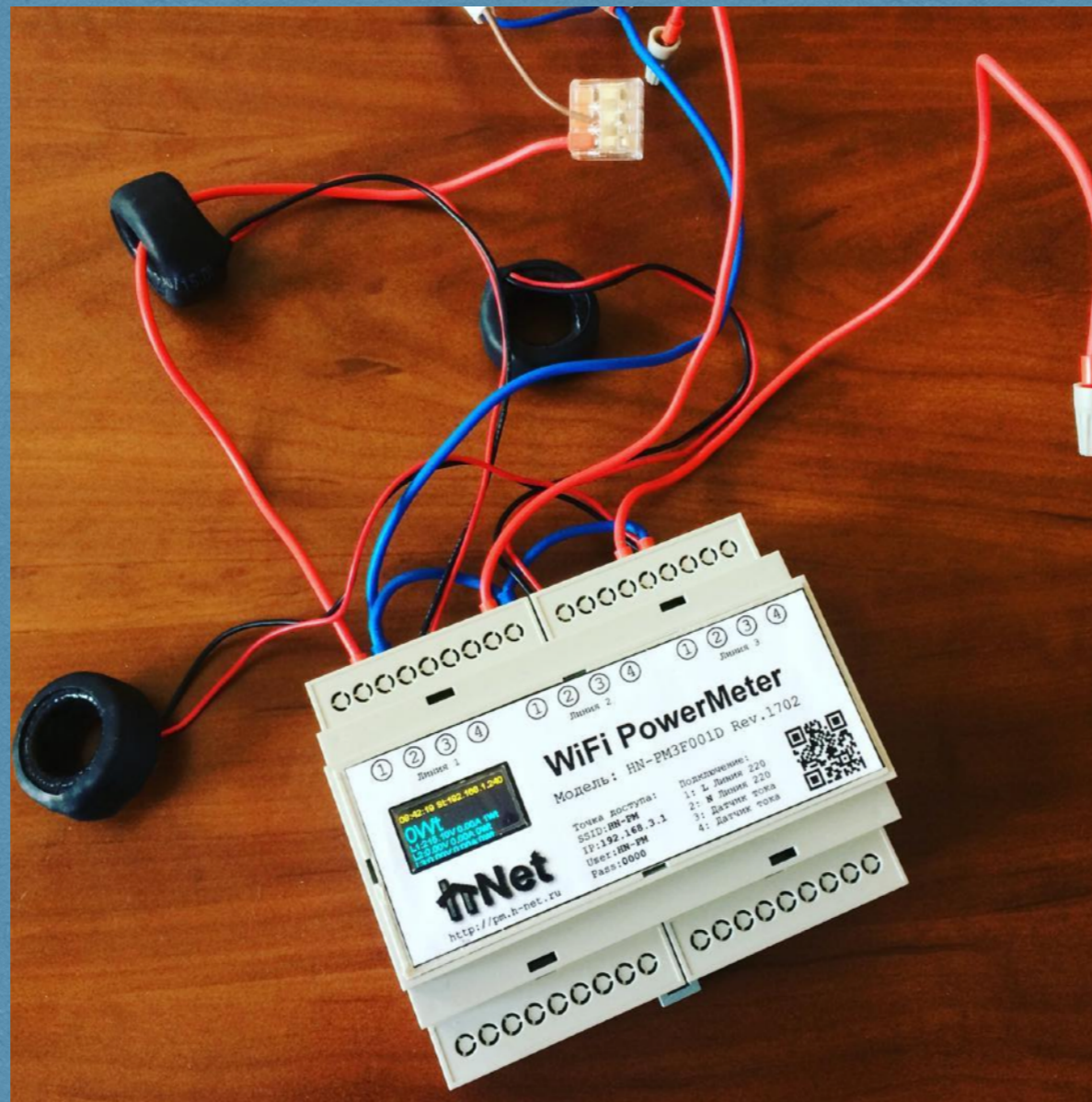
Start-up Case



Start-up Case



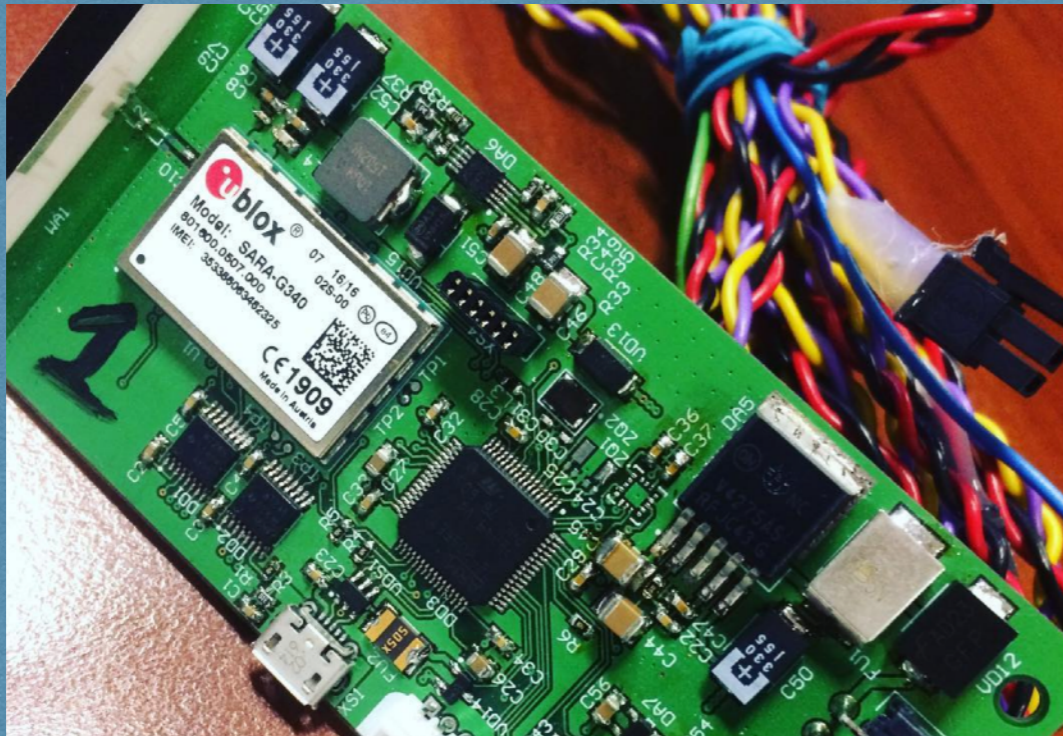
Tests Energy



Android Tests



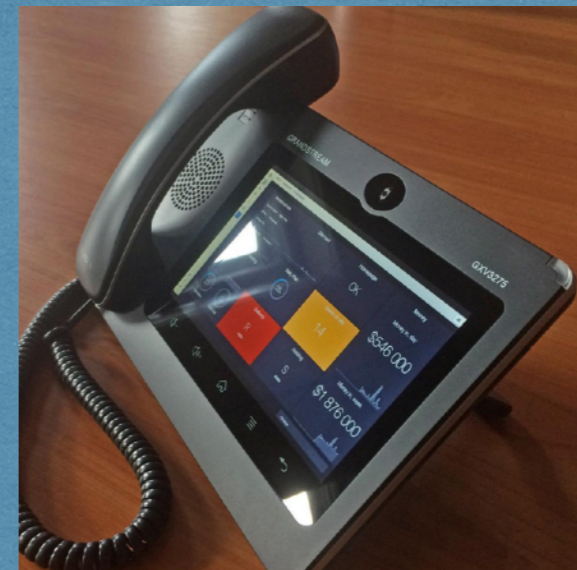
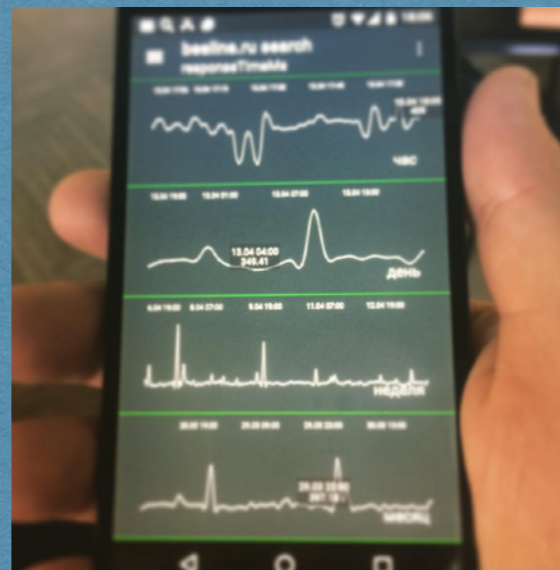
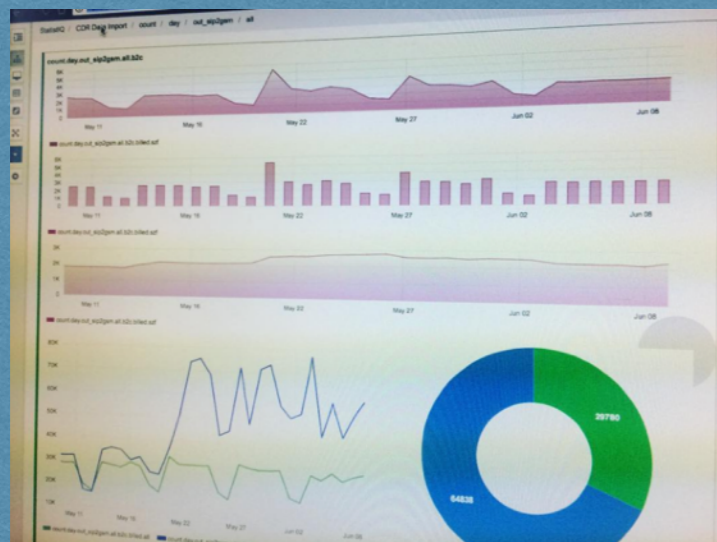
Cars & Cardio



tests...



Rich Views

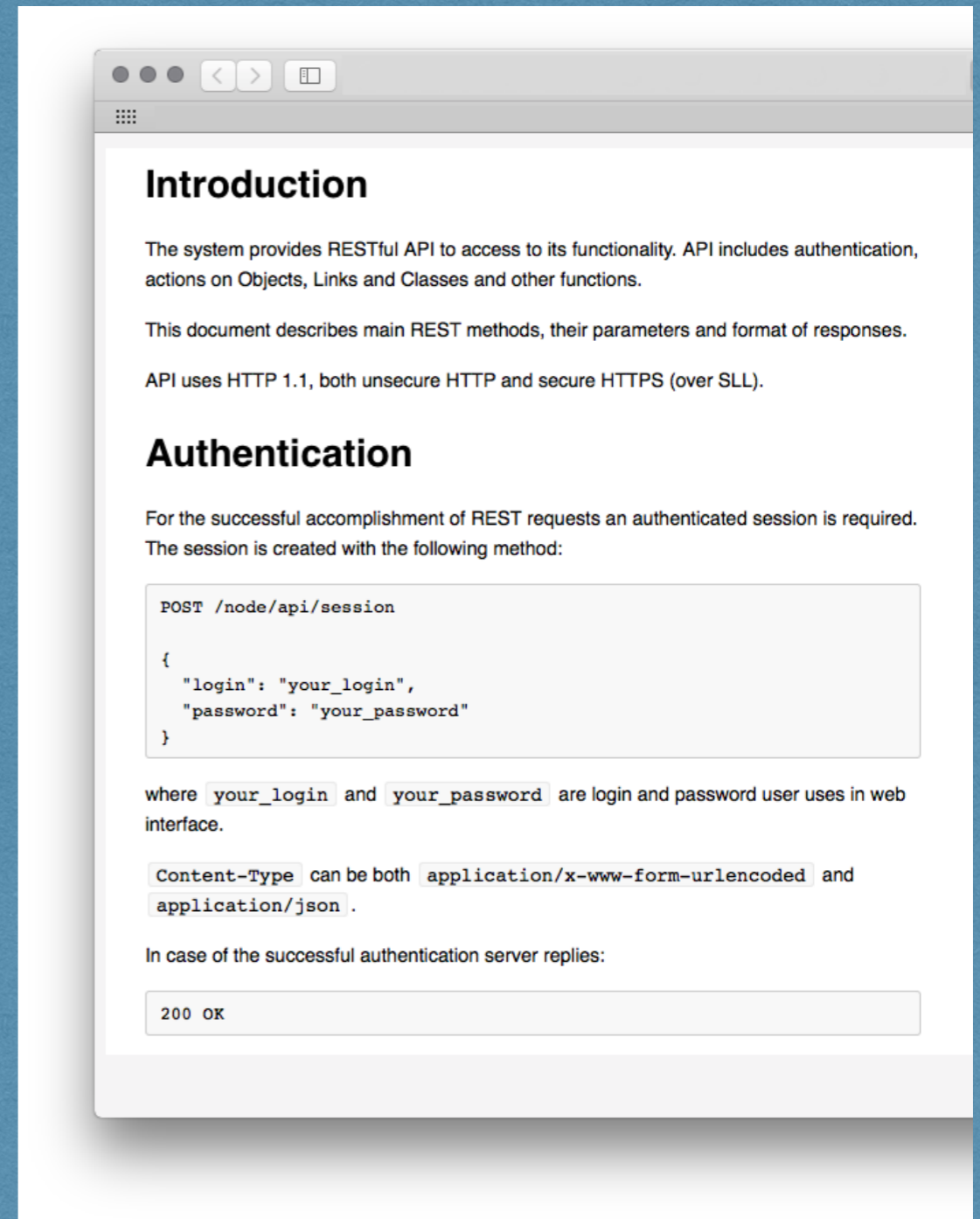


Multi-level Access

Open RESTful API

Well described Open HTTP/JSON API lets you and your partners organise

- platform-2-platform integration
- external UI integration
- new UI and Apps



The screenshot shows a web browser window displaying an API documentation page. The page has a white background and a grey header bar with navigation icons. The main content is organized into sections with bold headings. The 'Introduction' section explains that the system provides a RESTful API for accessing its functionality, including authentication, actions on Objects, Links, and Classes, and other functions. It also states that the document describes main REST methods, their parameters, and response formats, and that the API uses HTTP 1.1, both unsecured HTTP and secure HTTPS (over SSL). The 'Authentication' section states that an authenticated session is required for successful REST requests and describes the session creation method. A code block shows a POST request to /node/api/session with a JSON body containing login and password fields. Below the code block, it explains that the login and password fields correspond to the user's web interface credentials. It also notes that the Content-Type header can be either application/x-www-form-urlencoded or application/json. Finally, it states that a successful authentication server response is 200 OK.

Introduction

The system provides RESTful API to access to its functionality. API includes authentication, actions on Objects, Links and Classes and other functions.

This document describes main REST methods, their parameters and format of responses.

API uses HTTP 1.1, both unsecure HTTP and secure HTTPS (over SLL).

Authentication

For the successful accomplishment of REST requests an authenticated session is required. The session is created with the following method:

```
POST /node/api/session

{
  "login": "your_login",
  "password": "your_password"
}
```

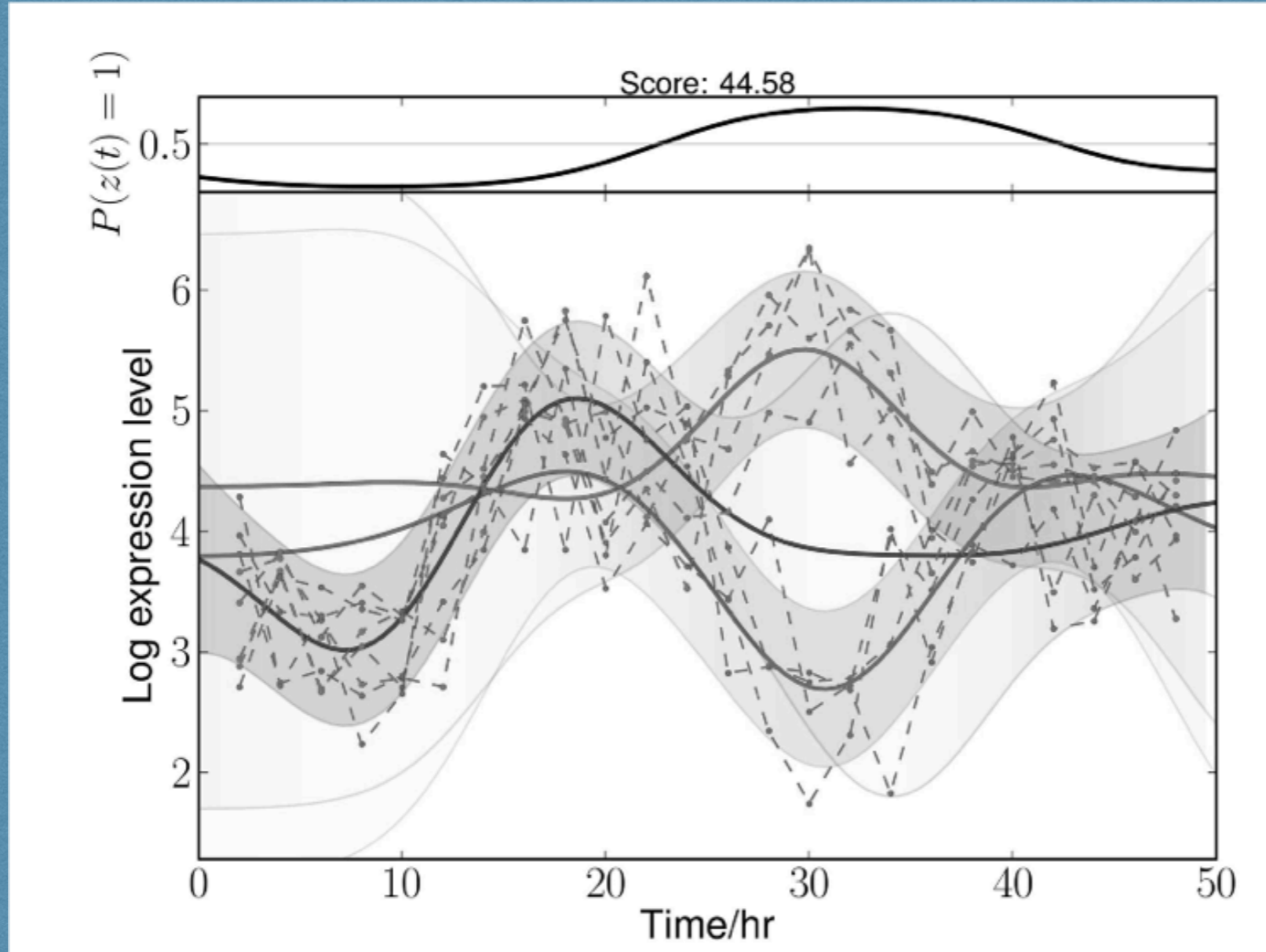
where `your_login` and `your_password` are login and password user uses in web interface.

`Content-Type` can be both `application/x-www-form-urlencoded` and `application/json`.

In case of the successful authentication server replies:

```
200 OK
```


ML...



AI...



BlockChain



Konstantin Mikhailov
km@saymon.info

